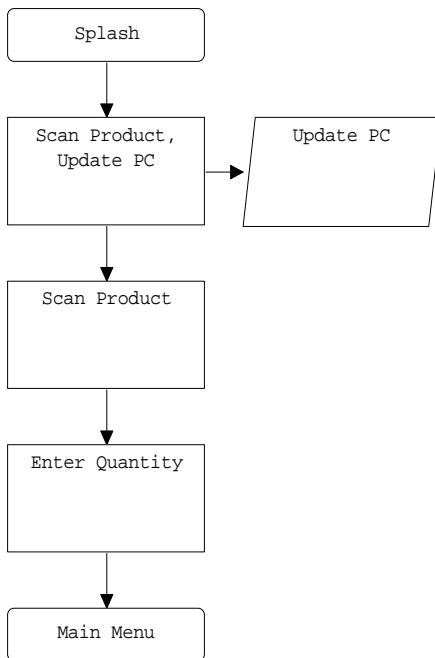


Applets...Stock Check

The Stock Check application is designed to allow companies to check their stock and can then send the collected data back to a CSV file on the PC to be interrogated by the company administrator.

The Stock Check is simple for two reasons the first being that on each screen you only have to enter one piece of data in the input box. The second reason is because you do not need to load any data on to the unit from the PC. All the data you collect will be synchronized with the folder that ActiveSync will be placing on your desktop. Each time you place the unit in the cradle it will automatically update the file in the folder, which ActiveSync placed on your desktop.

Stock Check



This simple application does not need an uploading facility due to not needing to load any information from the PC.

The terminal can now be connected to the PC and the data transferred to the PC in the pre-determined file created when creating the application. The data can now be imported into a back end office system like SAP or be interrogated within the file.

The data collected will be appended to the existing data within the file, within the folder placed on your desktop. When the administrator has manipulated the collected data it can be deleted or backed up into archive.



The Application Prompts for

- Product
- Quantity