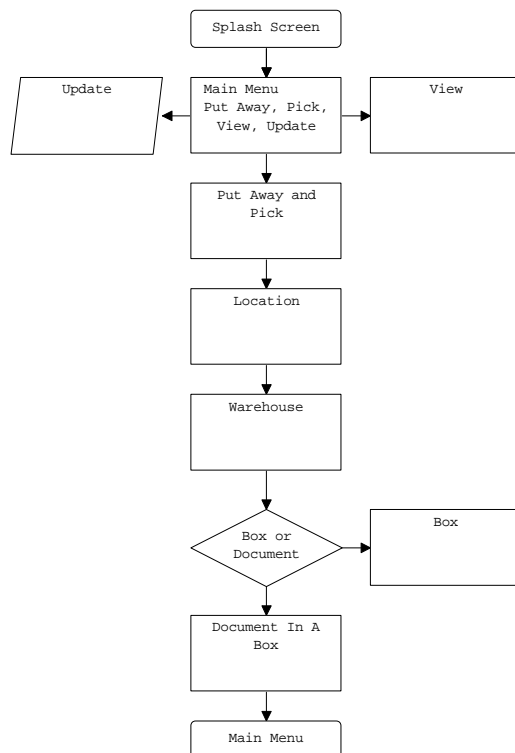




Applets....Put Away System

The Put Away System application is designed to allow companies to put away or pick items in a warehouse the data can be loaded on to a hand held terminal, Items can be processed and the collected data be sent to a spreadsheet on the PC / Server to be interrogated by company admin.

The Put Away System is simple because on each screen there is only need for one input. On the screens named Box and Document In A Box, there are three buttons the back button goes back to the decision screen, the done button saves the collected data and jumps back to the main menu where as the save button saves all the information and in case you have more than one piece of information or if you want to go back and use another screen.



Picking and Putting Away

This simple application does not have an uploading facility as the information is contained in the barcodes.

The terminal can now be connected to the PC and the data transferred. The data can now be imported into a back end office system like SAP or be interrogated within the file.

The data collected will be appended to the existing data within the table within workgroups, it can be deleted or backed up into archive.

The Application Prompts for

- Warehouse
- Location
- Box
- Documents in the Box